

#SaveNolaRestaurants

A call to support local
communities and preserve
history & culture

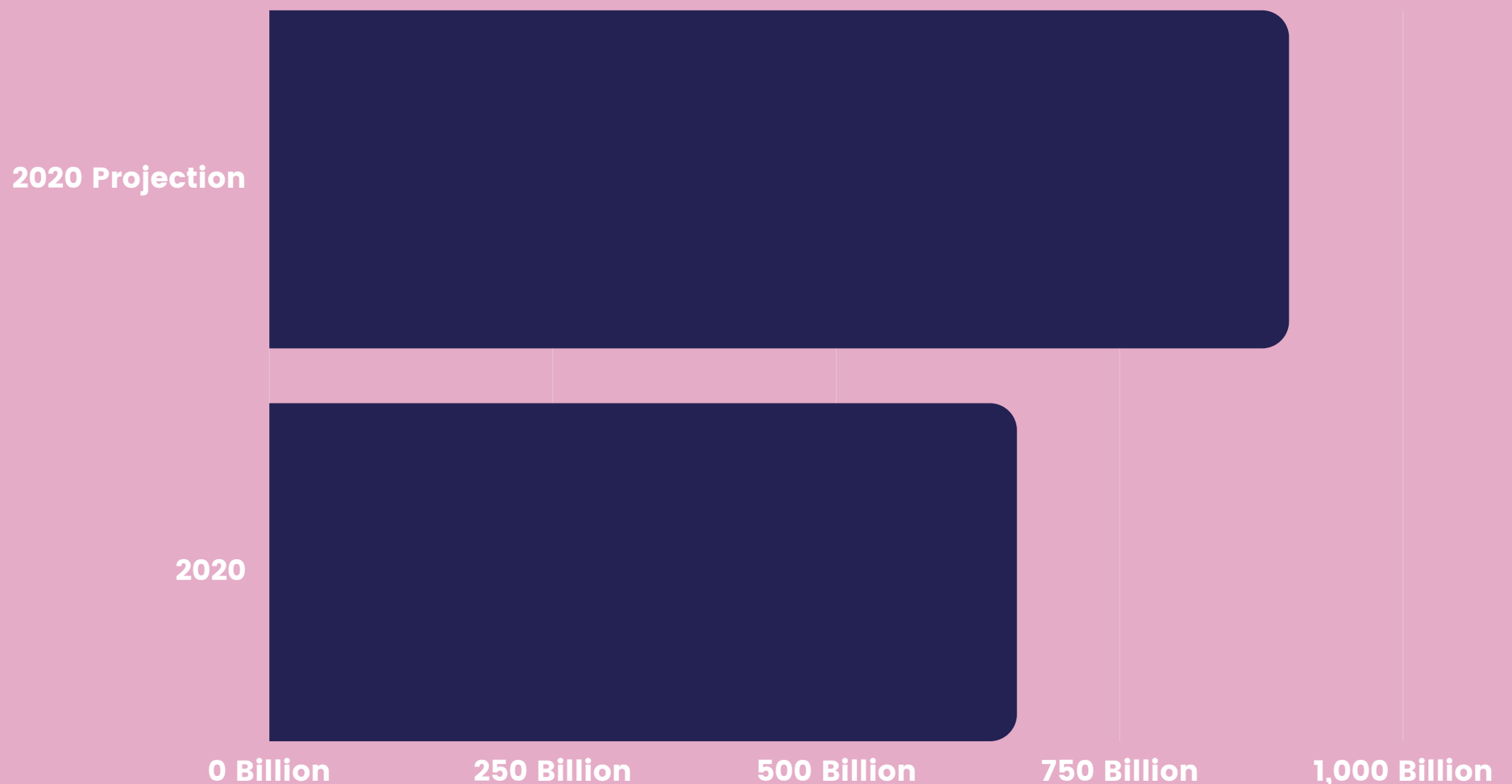
The Covid-19 outbreak and subsequent economic fallout has left countless historic New Orleans restaurants with their doors permanently closed. Let's do our part to support those that still struggle to remain open.

2020, A YEAR OF TRAGIC LOSS

\$240 BILLION IN LOSS

2.5 MILLION JOBS LOST

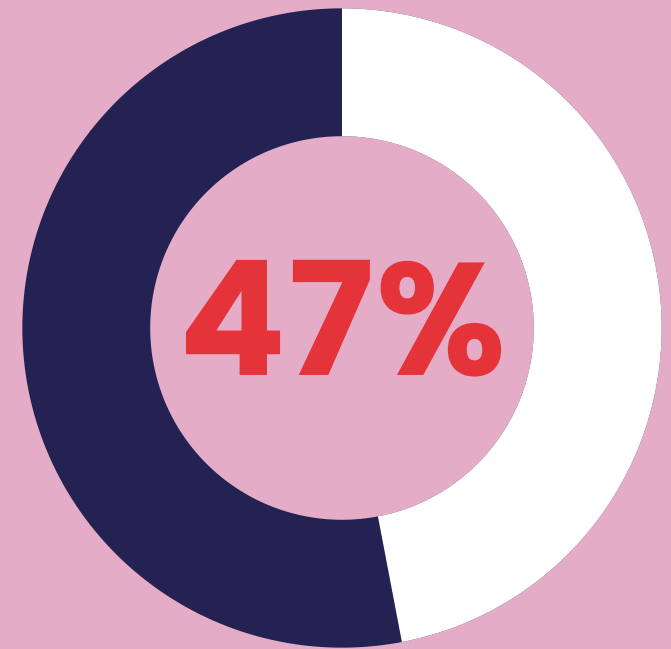
17% OF RESTAURANTS SHUT DOWN



DIVERSITY IN RESTAURANTS

Minorities make up 47% of employees in the restaurant industry

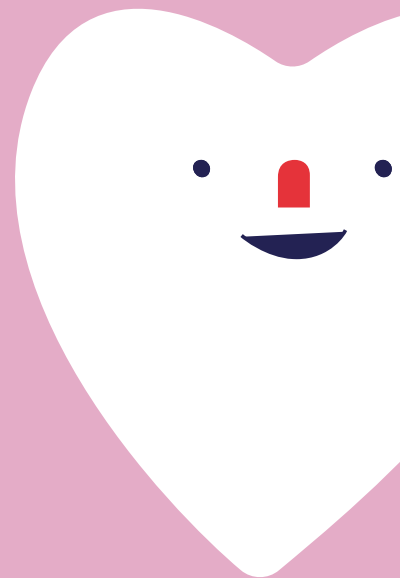
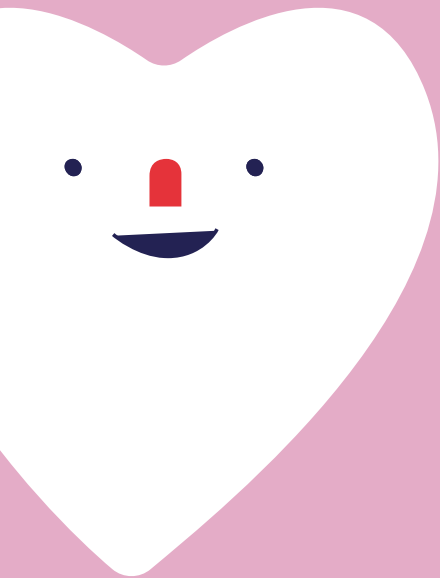
Employing more female and minority managers than ANY other industry



While the United States is 13% African American, New Orleans is almost 60%, causing a far more negative impact on that community in New Orleans than the greater United States

“Without a robust culinary scene, we lose more than just dollars. We lose our essence.”

**–Michael Hecht, president and chief executive of Greater New Orleans Inc.
(NYTimes)**



HOW TO SUPPORT NOLA RESTAURANTS IN CRISIS

Order Takeout, Order Local

reimagine dinners out with friends as picnics at the park and help restaurants stay afloat.

Tip BIG

slip a few extra dollars to those who need it. it goes straight to their pockets.

Write Reviews

look to google, yelp, facebook- all of these help spread the word.

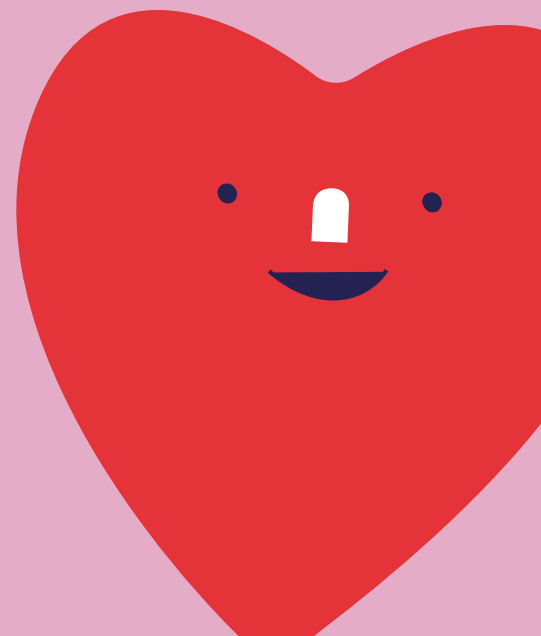
Donate to first-feed responders

Krewe of Red Beans collects donations to support local restaurants by order takeout for first-responders and healthcare workers on the frontlines.

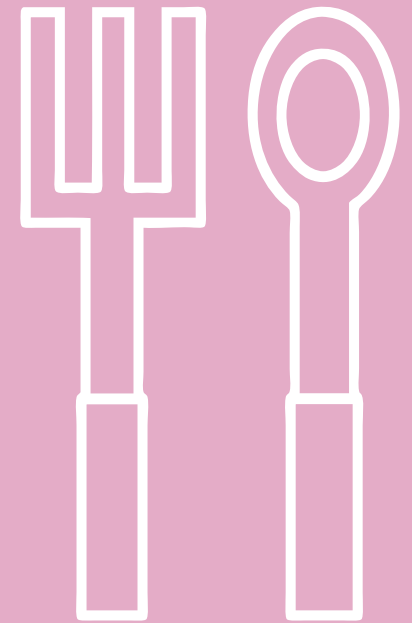
Link to Feed the Front Line NOLA GoFund Me

[https://www.gofundme.com/f/snacks-for-hospital-workers-in-nola?](https://www.gofundme.com/f/snacks-for-hospital-workers-in-nola?utm_campaign=p_cp_url&utm_medium=os&utm_source=customer)

[utm_campaign=p_cp_url&utm_medium=os&utm_source=customer](https://www.gofundme.com/f/snacks-for-hospital-workers-in-nola?utm_campaign=p_cp_url&utm_medium=os&utm_source=customer)



BLACK-OWNED RESTAURANTS TO SUPPORT



Café Dauphine

 (504)-309-6391

 www.nolacafedauphine.com

The Court of Two Sisters

 (504) 522-7261

 courtoftwosisters.com

Willie Mae's Scotch House

 (504) 822-9503

 williemaesnola.com

Li'l Dizzy's Cafe

 (504) 766-8687

 www.lildizzyscafe.net

The Munch Factory

 (504) 459-2180

 themunchfactory.net

Neyow's Creole Cafe

 (504) 827-5474

 neyows.com

Let's do our part to save this community.

#SaveNolaRestaurants

**★ LINK TO OUR ★
PODCAST EPISODE!**

**With Jessica Speight, Director of
People & Culture at Pom Hospitality**

